

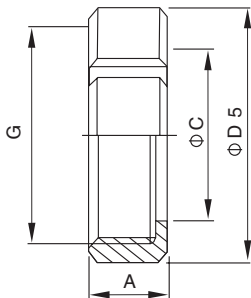


- ◆ Stainless Steel Sanitary Pipe Fitting
- ◆ Valve、Pump、Fluid Facility
- ◆ 不锈钢卫生级管件、阀门、泵、流体设备

卫生级由任组件
SANITARY UNION

圆螺母 Round Nut

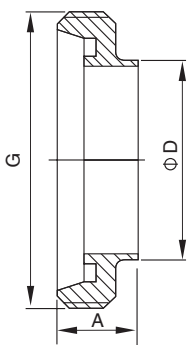
DIN11851 | DQ03



Size	A	G	D5	C
DN15	18	RD34X1/8	44	25.0
DN20	19	RD44X1/6	54	31.0
DN25	21	RD52X1/6	62	36.0
DN32	21	RD58X1/6	68	42.0
DN40	21	RD65X1/6	78	49.0
DN50	22	RD78X1/6	92	62.0
DN65	24	RD95X1/6	110	80.0
DN80	28	RD110X1/4	126	94.0
DN100	30	RD130X1/4	146	115.0
DN125	32	RD160X1/4	178	138.0
DN150	34	RD190X1/4	208	164.0

螺纹接头(短型) Male

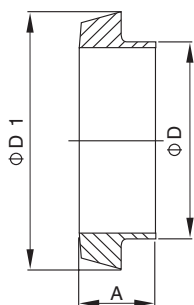
DIN11851 | DQ04



Size	A	G	D
DN10	17	RD28x1/8	12
DN15	17	RD34x1/8	18
DN20	19	RD44x1/6	22
DN25	22	RD52x1/6	28
DN32	22	RD58x1/6	34
DN40	22	RD65x1/6	40
DN50	23	RD78x1/6	52
DN65	25	RD95x1/6	70
DN80	30	RD110x1/4	85
DN100	30	RD130x1/4	104
DN125	35.5	RD160x1/4	129
DN150	40	RD190x1/4	154

平接头(短型) Liner

DIN11851 | DQ05



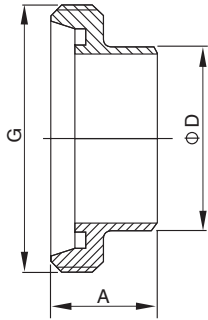
Size	A	D	D1
DN10	13	12	22
DN15	13	18	28.5
DN20	13	22	36.5
DN25	15	28	44
DN32	15	34	50
DN40	15	40	56
DN50	16	52	68.5
DN65	17	70	86
DN80	17	85	100
DN100	20	104	121
DN125	23.5	129	150
DN150	27	154	176



- ◆ Stainless Steel Sanitary Pipe Fitting
- ◆ Valve、Pump、Fluid Facility
- ◆ 不锈钢卫生级管件、阀门、泵、流体设备

长型螺纹接头 Long Male

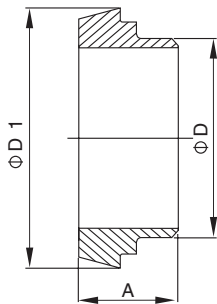
DIN11851 | DQ07



Size	A	D	G		
DN15	21	21	RD34x1/8		
DN20	24	25	RD44x1/6		
DN25	29	31	RD52x1/6		
DN32	32	37	RD58x1/6		
DN40	33	43	RD65x1/6		
DN50	35	55	RD78x1/6		
DN65	40	72	RD95x1/6		
DN80	45	87	RD110x1/4		
DN100	54	106	RD130x1/4		
DN125	46	132	RD160x1/4		
DN150	50	157	RD190x1/4		

长型平接头 Long Liner

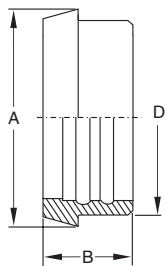
DIN11851 | DQ08



Size	A	D	D1		
DN15	17	21	28		
DN20	18	25	36		
DN25	22	31	43		
DN32	25	37	49		
DN40	26	43	55		
DN50	28	55	68		
DN65	32	72	85		
DN80	37	87	100		
DN100	44	106	120		
DN125	34	132	149		
DN150	37	157	176		

膨胀型平接头 Expanded Liner

DIN11851 | DQ09



Size	A	B	D		
DN25	44	22	28.2		
DN32	50	25	34.2		
DN40	56	26	40.2		
DN50	68	28	52.2		
DN65	86	32	70.3		
DN80	100	37	85.3		
DN100	121	44	104.3		

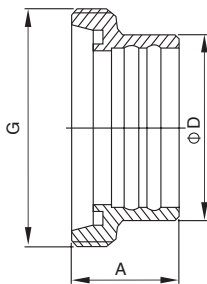


- ◆ Stainless Steel Sanitary Pipe Fitting
- ◆ Valve、Pump、Fluid Facility
- ◆ 不锈钢卫生级管件、阀门、泵、流体设备

卫生级由任组件
SANITARY UNION

膨胀型螺纹接头 Expanded Male

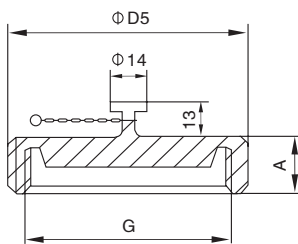
DIN11851 | DQ10



Size	A	D	G		
DN15	21	24	RD34x1/8		
DN20	24	30	RD44x1/6		
DN25	29	35	RD52x1/6		
DN32	32	41	RD58x1/6		
DN40	33	48	RD65x1/6		
DN50	35	61	RD78x1/6		
DN65	40	79	RD95x1/6		
DN80	45	93	RD110x1/4		
DN100	54	114	RD130x1/4		
DN125	46	137	RD160x1/4		
DN150	50	163	RD190x1/4		

带链条盲螺母 Blind Cap with chain

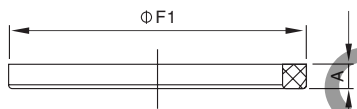
DIN | DQ11



Size	A	G	D5		
DN15	18	RD34x1/8	44		
DN20	19	RD44x1/6	54		
DN25	21	RD52x1/6	62		
DN32	21	RD58x1/6	68		
DN40	21	RD65x1/6	78		
DN50	22	RD78x1/6	92		
DN65	24	RD95x1/6	110		
DN80	28	RD110x1/4	126		
DN100	30	RD130x1/4	146		
DN125	32	RD160x1/4	178		
DN150	34	RD190x1/4	208		

由任垫圈 Gasket for Union

DIN | DQ12



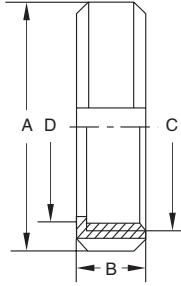
Size	A	F1			
DN15	5	26			
DN20	5	33			
DN25	5	40			
DN32	5	46			
DN40	5	52			
DN50	5	64			
DN65	5	81			
DN80	6	95			
DN100	6	114			
DN125	7	142			
DN150	7	167			



- ◆ Stainless Steel Sanitary Pipe Fitting
- ◆ Valve、Pump、Fluid Facility
- ◆ 不锈钢卫生级管件、阀门、泵、流体设备

圆螺母 Round Nut

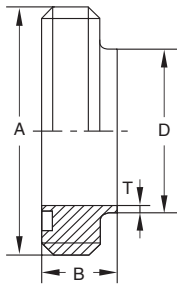
ISO/SMS IQ01



Size	A	B	C	D
1"	51	20	RD40x1/6	32
1.25"	60	22	RD48x1/6	40
1.5"	72	23	RD60x1/6	48
2"	82	23.5	RD70x1/6	60.5
2.5"	98	25	RD85x1/6	74
3"	113	26.5	RD98x1/6	87
3.5"	125	28	RD110x1/6	100.5
4"	150	32.5	RD132x1/6	117

螺纹接头 Male

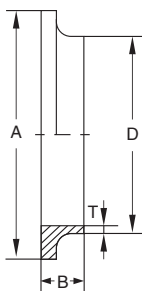
ISO/SMS IQ02



Size	DxT	A	B
1"	25.4x1.5	RD40x1/6	15
1.25"	31.8x1.5	RD48x1/6	17
1.5"	38.1x1.5	RD60x1/6	20
2"	50.8x1.5	RD70x1/6	20
2.5"	63.5x2.0	RD85x1/6	24
3"	76.1x2.0	RD98x1/6	24
3.5"	88.9x2.0	RD110x1/6	30
4"	101.6x2.0	RD132x1/6	35

平接头(短型) Liner Short

ISO/SMS IQ03



Size	DxT	A	B
1"	25.4x1.5	35.5	7.5
1.25"	31.8x1.5	43.5	7.5
1.5"	38.1x1.5	55.0	9
2"	50.8x1.5	65.0	9
2.5"	63.5x2.0	80.0	9
3"	76.1x2.0	93.0	10
3.5"	88.9x2.0	105.0	12
4"	101.6x2.0	127.0	12

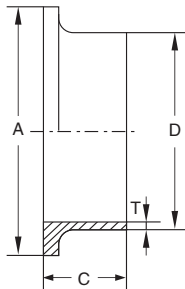


- ◆ Stainless Steel Sanitary Pipe Fitting
- ◆ Valve、Pump、Fluid Facility
- ◆ 不锈钢卫生级管件、阀门、泵、流体设备

卫生级由任组件
SANITARY UNION

平接头(长型) Liner Long

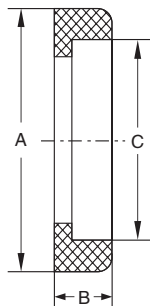
ISO/SMS IQ04



Size	DxT	A	B	C
1"	25.4x1.5	35.5	17	
1.25"	31.8x1.5	43.5	17	
1.5"	38.1x1.5	55.0	20	
2"	50.8x1.5	65.0	20	
2.5"	63.5x2.0	80.0	25	
3"	76.1x2.0	93.0	30	
3.5"	88.9x2.0	105.0	35	
4"	101.6x2.0	127.0	35	

密封圈 Gasket

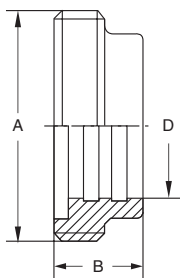
ISO/SMS IQ05



Size	A	B	C
1"	32	5.5	23
1.25"	40	5.5	29.5
1.5"	48	5.5	35.5
2"	61	5.5	48.5
2.5"	73.5	5.5	60.5
3"	86	5.5	75
3.5"	100	5.5	86
4"	114	5.5	98.5

胀型螺纹接头 Expanding Male

ISO/SMS IQ06



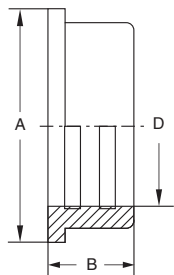
Size	A	B	D
1"	RD40x1/6	20	25.6
1.5"	RD60x1/6	23	38.3
2"	RD70x1/6	25	51
2.5"	RD85x1/6	30	63.7
3"	RD98x1/6	35	76.3
4"	RD132x1/6	45	101.9



- ◆ Stainless Steel Sanitary Pipe Fitting
- ◆ Valve、Pump、Fluid Facility
- ◆ 不锈钢卫生级管件、阀门、泵、流体设备

胀型平接头 Expanding Liner

ISO/SMS IQ07



Size	A	B	D
1"	35.5	17	25.6
1.5"	55.0	20	38.3
2"	65.0	20	51
2.5"	80.0	25	63.7
3"	93.0	30	76.3
4"	127.0	40	101.9

密封圈 Gasket

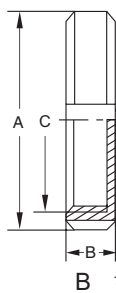
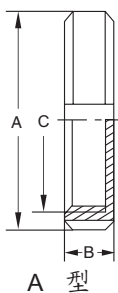
ISO/SMS IQ08



Size	A	B
1"	32	5.5
1.5"	48	5.5
2"	61	5.5
2.5"	73.5	5.5
3"	86	5.5
4"	114	5.5

封盖螺母 Blind Nut

ISO/SMS IQ09



Size	A	B	C
1"	51	17	RD40x1/6
1.25"	60	18	RD48x1/6
1.5"	72	19	RD60x1/6
2"	82	20	RD70x1/6
2.5"	98	20	RD85x1/6
3"	113	22	RD98x1/6
3.5"	125	24	RD110x1/6
4"	150	28	RD132x1/6

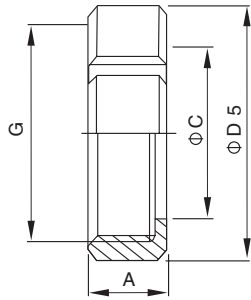


- ◆ Stainless Steel Sanitary Pipe Fitting
- ◆ Valve、Pump、Fluid Facility
- ◆ 不锈钢卫生级管件、阀门、泵、流体设备

卫生级由任组件
SANITARY UNION

圆螺母 Round Nut

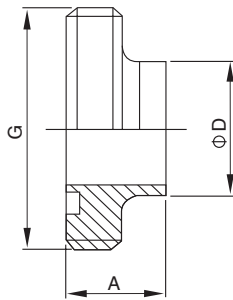
SMS | SQ01



Size	A	G	D5	C
19	18	RD34x1/8	44	25.0
25	19	RD40x1/6	50	30.5
32	21	RD48x1/6	60	37.0
38	21	RD60x1/6	72	48.5
51	22	RD70x1/6	82	58.5
63	24	RD85x1/6	98	73.5
76	26	RD98x1/6	114	86.0
89	28	RD110x1/6	125	98.5
102小	28	RD125x1/6	140	113.0
102大	30	RD132x1/6	150	118.0

螺纹接头 Male

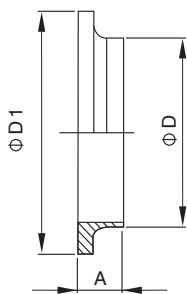
SMS | SQ02



Size	A	G	D
19	16	RD34x1/8	19.1
25	18	RD40x1/6	25.4
32	20	RD48x1/6	31.8
38	20	RD60x1/6	38.1
51	21	RD70x1/6	50.8
63	22	RD85x1/6	63.5
76	24	RD98x1/6	76.2
89	26	RD110x1/6	88.9
102小	27	RD125x1/6	101.1
102大	28	RD132x1/6	101.1

圆弧型平接头 Circular Liner

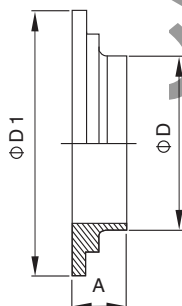
SMS | SQ03



Size	A	D	D1
19	11	19.1	30.8
25	12	25.4	35.7
32	12	31.8	43.7
38	12	38.1	55.7
51	12	50.8	65.7
63	12	63.5	80.7
76	13	76.2	93.5
89	13	88.9	105.5
102小	15	101.1	120.5
102大	15	101.1	127.5

台阶型平接头 Stepped Liner

SMS | SQ04



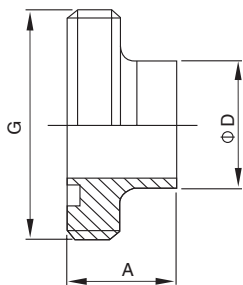
Size	A	D	D1
19	12	19.1	30.8
25	13	25.4	35.7
32	13	31.8	43.7
38	13	38.1	55.7
51	13	50.8	65.7
63	14	63.5	80.7
76	14	76.2	93.5
89	15	88.9	105.5
102小	17	101.1	120.5
102大	17	101.1	127.5



- ◆ Stainless Steel Sanitary Pipe Fitting
- ◆ Valve、Pump、Fluid Facility
- ◆ 不锈钢卫生级管件、阀门、泵、流体设备

螺纹接头(长型) Male (Long-type)

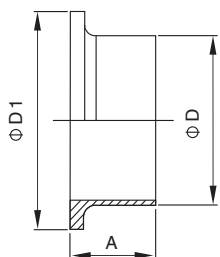
SMS | SQ05



Size	A	D	G			
25	19	25.4	RD40x1/6			
38	23	38.1	RD60x1/6			
51	23	50.8	RD70x1/6			
63	27	63.5	RD85x1/6			
76	27	76.2	RD98x1/6			
102小	27	101.6	RD125x1/6			
102大	30	101.6	RD132x1/6			

圆弧型平接头 Circular Liner

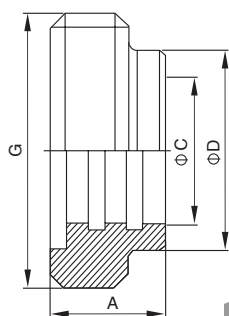
SMS | SQ06



Size	A	D	D1			
25	15	25.4	35.7			
38	20	38.1	55.7			
51	20	50.8	65.7			
63	21	63.5	80.7			
76	21	76.2	93.5			
102小	21	101.6	120.5			
102大	21	101.6	127.5			

膨胀型螺纹接头 Expanded Male

SMS | SQ07



Size	A	G	D	C		
19	20	RD34x1/8	25.0	19.2		
25	20	RD40x1/6	31.5	25.5		
32	20	RD48x1/6	38.0	31.9		
38	23	RD60x1/6	46.0	38.2		
51	25	RD70x1/6	59.0	50.9		
63	30	RD85x1/6	72.0	63.6		
76	30	RD98x1/6	85.0	76.3		
89	32	RD110x1/6	98.0	89.0		
102小	35	RD125x1/6	112.0	101.7		
102大	35	RD132x1/6	112.0	101.7		

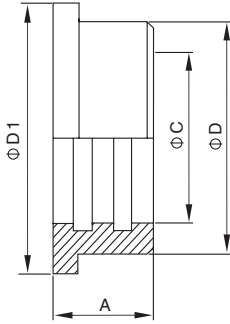


- ◆ Stainless Steel Sanitary Pipe Fitting
- ◆ Valve、Pump、Fluid Facility
- ◆ 不锈钢卫生级管件、阀门、泵、流体设备

卫生级由任组件
 SANITARY UNION

膨胀型平接头 Expanded Liner

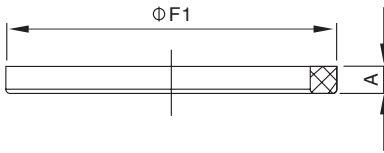
SMS | SQ08



Size	A	D1	D	C
19	24	30.0	25.0	19.2
25	17	35.0	31.5	25.5
32	17	43.0	38.0	31.9
38	20	55.0	46.0	38.2
51	20	65.0	59.0	50.9
63	25	80.0	72.0	63.6
76	25	93.0	85.0	76.3
89	27	105.0	98.0	89.0
102小	30	120.5	112.0	101.7
102大	30	127.5	112.0	101.7

由任垫圈 Gasket for Union

SMS | SQ09



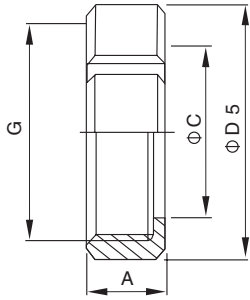
Size	A	F1
25	5.5	33.0
32	5.5	40.0
38	5.5	48.0
51	5.5	61.0
63	5.5	73.0
76	6.0	86.0
89	6.0	99.0
102	6.0	114.0



- ◆ Stainless Steel Sanitary Pipe Fitting
- ◆ Valve、Pump、Fluid Facility
- ◆ 不锈钢卫生级管件、阀门、泵、流体设备

圆螺母 Round Nut

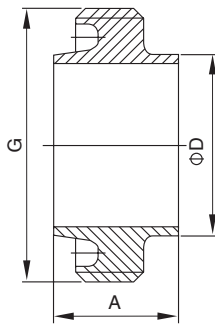
RJT | RQ01



Size	A	G	C	D5
1"	22	42.266x8TWHIT	33.45	58.5
1.5"	22	54.966x8TWHIT	46	74.0
2"	22	67.920x6TWHIT	58.67	85.5
2.5"	22	80.620x6TWHIT	71.4	98.5
3"	22	93.320x6TWHIT	84.1	111.6
4"	22	119.00x6TWHIT	109.7	138.0

螺纹接头 Male

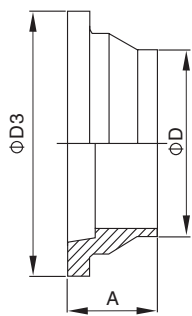
RJT | RQ02



Size	A	G	D
1"	27	45.72x8T	25.4
1.5"	27	58.42x8T	38.1
2"	27	72.72x6T	50.8
2.5"	27	85.42x6T	63.5
3"	27	98.12x6T	76.2
4"	27	123.52x6T	101.6

平接头 Liner

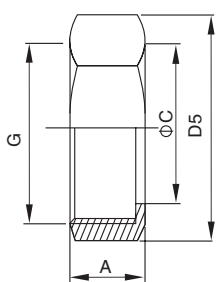
RJT | RQ03



Size	A	D	D3
1"	19.5	25.4	41.3
1.5"	19.5	38.1	54
2"	19.5	50.8	66.7
2.5"	19.5	63.5	79.4
3"	19.5	76.2	92.1
4"	19.5	101.6	117.5

六角螺母 Hexagon Nut

RJT | RQ04



Size	A	G	C	D5
1"	22	42.266x8TWHIT	33.45	58.7
1.5"	22	54.966x8TWHIT	46	75.1
2"	22	67.920x6TWHIT	58.67	91.7
2.5"	22	80.620x6TWHIT	71.4	106.4
3"	22	93.320x6TWHIT	84.1	120.3
4"	22	118.720x6TWHIT	109.7	150.4

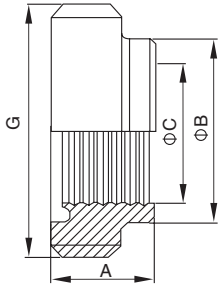


- ◆ Stainless Steel Sanitary Pipe Fitting
- ◆ Valve、Pump、Fluid Facility
- ◆ 不锈钢卫生级管件、阀门、泵、流体设备

卫生级由任组件
SANITARY UNION

膨胀型螺纹接头 Expanded Male

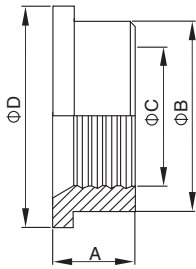
RJT | RQ05



Size	A	G	B	C
1"	20	45.72x8T	32.5	25.5
1.5"	24	58.42x8T	45.5	38.2
2"	28	72.72x6T	57.9	50.9
2.5"	32	85.42x6T	70.6	63.6
3"	32	98.12x6T	83.3	76.3
4"	32	123.52x6T	108.7	101.6

膨胀型平接头 Expanded Liner

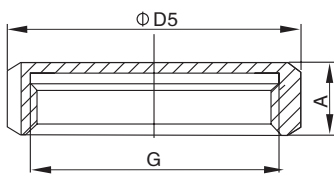
RJT | RQ06



Size	A	D	B	C
1"	20	41.3	32.5	25.5
1.5"	24	54	45.5	38.2
2"	28	66.7	57.9	50.9
2.5"	32	79.4	70.6	63.6
3"	32	92.1	83.3	76.3
4"	32	117.5	108.7	101.6

盲螺母 Blind Cap

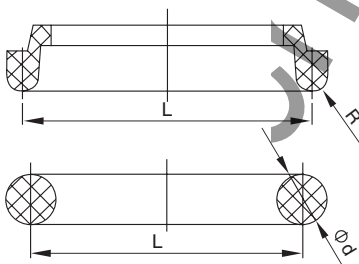
RJT | RQ07



Size	A	G	D5
1"	22	45.7x8TWHIT	58.5
1.5"	22	58.4x8TWHIT	74.0
2"	22	72.7x6TWHIT	85.5
2.5"	22	85.4x6TWHIT	98.5
3"	22	98.1x6TWHIT	111.6
4"	22	123.8x6TWHIT	138.0

由任垫圈 Gasket for Union

RJT | RQ08



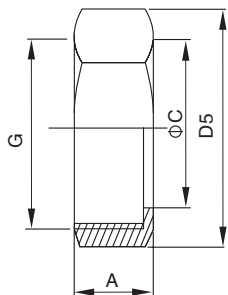
Size	L	R	d
1"	33.3	3.2	6.6
1.5"	46	3.2	6.6
2"	58.7	3.2	6.6
2.5"	71.4	3.2	6.6
3"	84.1	3.2	6.6
4"	109.5	3.2	6.6



- ◆ Stainless Steel Sanitary Pipe Fitting
- ◆ Valve、Pump、Fluid Facility
- ◆ 不锈钢卫生级管件、阀门、泵、流体设备

六角螺母 Hexagon Nut

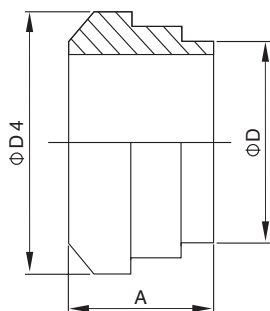
3A | 3AQ01



Size	A	G	D5	C
1"	23	38.02x1/8TWHIT	46	30.3
1.5"	24.6	51.54x1/8TWHIT	61.1	43.4
2"	27	65.05x1/8TWHIT	76.2	56.5
2.5"	29.6	78.56x1/8TWHIT	91.3	69.6
3"	32.5	92.08x1/8TWHIT	106.4	82.7
4"	38.1	120.14x1/6TWHIT	137.6	108.9

平接头 Liner

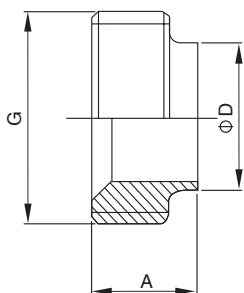
3A | 3AQ02



Size	D	D4	A	
			14PRF	14A
1"	25.4	33.3	18.3	34.9
1.5"	38.1	46.8	18.3	38.1
2"	50.8	60.3	19.1	38.1
2.5"	63.5	73.8	22.3	44.5
3"	76.2	87.3	23.1	44.5
4"	101.6	114.3	26.2	44.5

螺纹接头 Male

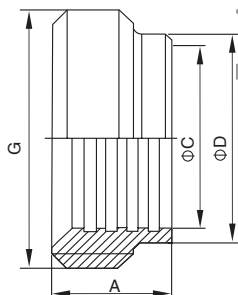
3A | 3AQ03



Size	G	D	A(inch)
1"	37.13ACME8TPI	25.4	11/16
1.5"	50.65ACME8TPI	38.1	11/16
2"	64.17ACME8TPI	50.8	23/32
2.5"	77.67ACME8TPI	63.5	27/32
3"	91.19ACME8TPI	76.2	15/16
4"	119.25ACME8TPI	101.6	1

膨胀型螺纹接头 Expanded Male

3A | 3AQ04



Size	A	G	D	C
1"	20.6	37.13x1/8TWHIT	29.5	25.5
1.5"	28.6	50.65x1/8TWHIT	42.6	38.2
2"	34.9	64.1x1/8TWHIT	55.7	50.9
2.5"	38.1	77.67x1/8TWHIT	68.8	63.6
3"	41.3	91.19x1/8TWHIT	81.9	76.3
4"	41.3	119.25x1/8TWHIT	108.1	101.7

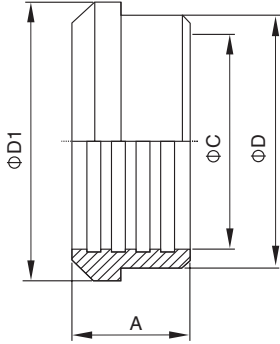


- ◆ Stainless Steel Sanitary Pipe Fitting
- ◆ Valve、Pump、Fluid Facility
- ◆ 不锈钢卫生级管件、阀门、泵、流体设备

卫生级由任组件
 SANITARY UNION

膨胀型平接头 Expanded Liner

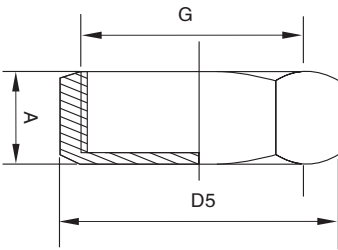
3A | 3AQ05



Size	A	D1	D	C
1"	19.1	33.3	29.5	25.5
1.5"	28.6	46.8	42.6	38.2
2"	33.3	60.3	55.7	50.9
2.5"	34.9	73.8	68.8	63.6
3"	36.5	87.3	81.9	76.3
4"	38.1	114.3	108.1	101.7

盲螺母 Blind Cap

3A | 3AQ06



Size	A	G	D5
1"	23	38.02x1/8TWHIT	52
1.5"	24.6	51.54x1/8TWHIT	70.6
2"	27	65.05x1/8TWHIT	88
2.5"	29.6	87.56x1/8TWHIT	105.5
3"	32.5	92.08x1/8TWHIT	123
4"	38.1	120.14x1/6TWHIT	159